

WARRIOR™

HYDRAULIC BOLLARDS



BoomGate®
Systems (PTY) LTD

Reg. No. 98/23505/07 Engineering Access Control



MARKET LEADER:

- Robust design.
- Ultra reliable.
- Exported worldwide.

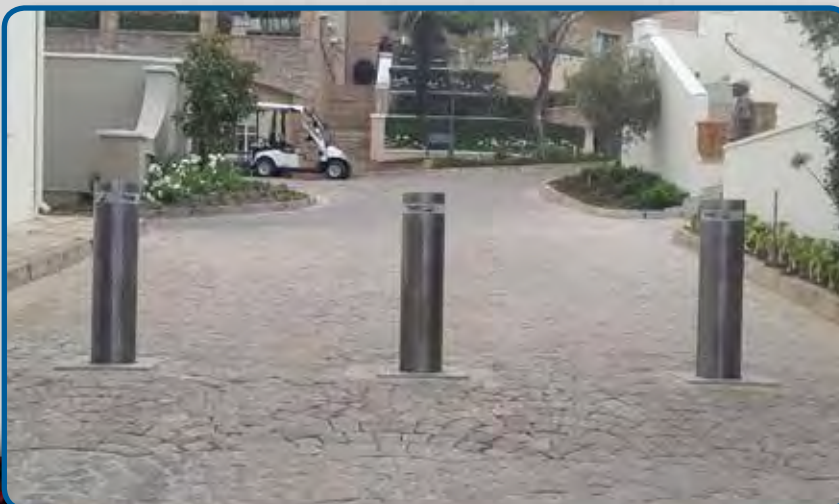


APPLICATIONS:

- Banks
- Car Parks
- Commercial/Industrial premises
- Embassies
- Military Installations
- Security Establishments
- Toll Roads
- Hotels
- Hospitals
- High Risk Cargo Depots
- Border Posts
- Cash Handling Depots

THE OPERATION OF HYDRAULIC BOLLARD

The Hydraulic Bollard can be used to control vehicles in either one way or two way configurations and is specifically designed to interface with our extensive range of access control security systems, remote manned operation or open/close vehicle loop detectors. The 'red' traffic light is illuminated while the Hydraulic Bollard is in its active position. The 'green' light only being illuminated once the Hydraulic Bollard is fully retracted. As the vehicle passes on to the safety/closing induction loop, the light will change to red signalling the next vehicle to stop. The Hydraulic Bollard can be lowered manually in the event of a power failure. Furthermore, the Hydraulic Bollard can operate with a comprehensive range of cabinet mounted key switches for Emergency Service or site specific operational requirements.





900MM HYDRAULIC BOLLARD



900MM HYDRAULIC BOLLARD



600MM HYDRAULIC BOLLARD

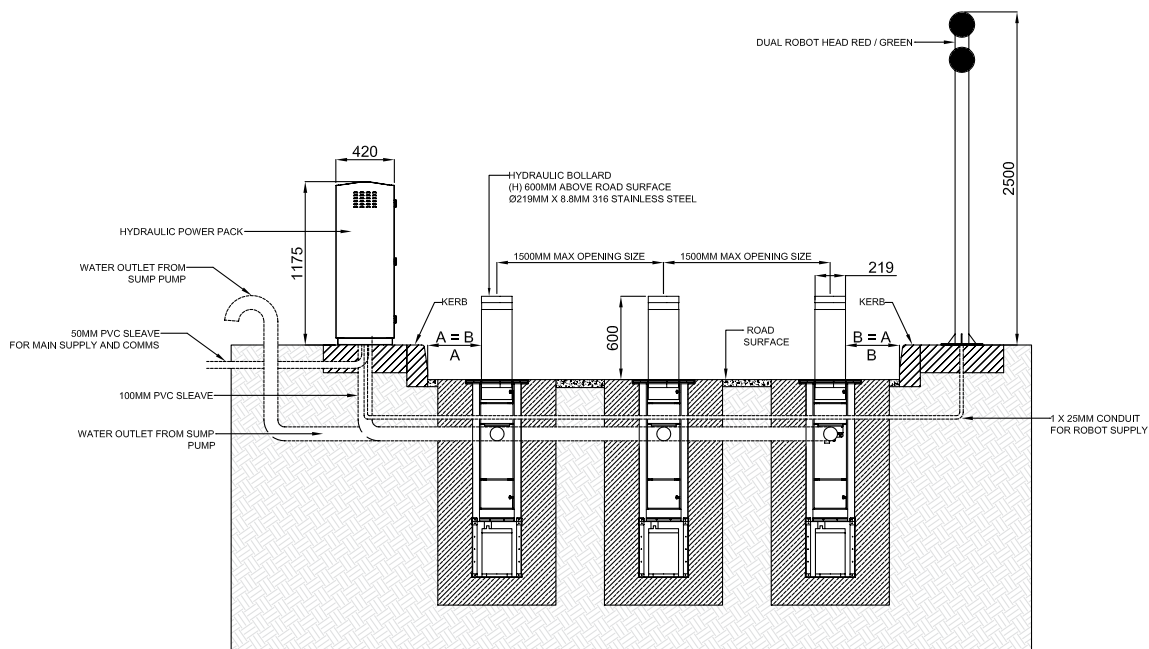
TECHNICAL SPECIFICATIONS OF HYDRAULIC BOLLARD 219-600MM

- Moving Cylinder:
Stainless Steel 316L-8.8mm thick
- Moving Cylinder Diameter:
219mm
- Moving Cylinder Stroke:
600mm / 900mm
- Cylinder Top (head):
Stainless Steel 304
- Cylinder Top Cover Plate:
5mm thick Stainless Steel
- Pit Frame: Hot dip galvanized frame s/s
304 cover plates
- Drive Speed: 12cm/sec
- Work Frequency-resistance class:
100% duty cycle
- Provision for drainage:
Yes (Sump Pump)
- Manual Lowering: Yes
- Manual Rising: Yes
- Overall weight of Bollard: 167Kg
- Dimensions of pit with sump pump:
355mm x 435mm x 1415mm (h)
- Dimensions of pit excl sump pump:
355mm x 435mm x 1015mm (h)
- Standard length of Hydraulic hoses:
15 meter Hydraulic hoses

HYDRAULIC POWER PACK

- Hydraulic Power Pack Enclosure: IP 55
- Hydraulic Power Pack Dimensions:
420mm x 800mm x 1175mm
- Hydraulic Power Pack Weight: 200Kg
- Hydraulic Power Pack
Mounting: Mounted on concrete plinth
- Electronic Control Circuit:
Programmable micro processor with
dedicated inputs and outputs with built
in loop detector
- Hydraulic Pump: 50mF 450v/
300mF 300v
- Capacitor for Pump: 2272W at 220V
- Work Temperature: - 10°C + 70°C
- Electrical Input: 30 Amp double pole
6KA circuit breaker
- Protection Cut-Off: 12V Standard
power 100VA
- Service Transformer: Max 10 units
featuring simultaneous movement
- Maximum number of units to be
connected to the control station:
The 1st unit is connected to the
master unit - the rest are connected to
additional slave units.

600MM HYDRAULIC BOLLARD INSTALLATION



BoomGate[®]
Systems (PTY) LTD

Reg.No. 98/23505/07

Engineering Access Control



JOHANNESBURG BRANCH: Tel: +27 11 674 4441 • Fax: +27 11 674 4450 • Email: boomgate@global.co.za

18 Minerva Avenue, Leaglen, Florida, Roodepoort, SOUTH AFRICA

CAPE TOWN BRANCH: Tel: +27 21 551 0849 • Fax: +27 21 551 8627 • Email: salesct2@boomgatesystems.co.za

Unit 2 Crest Park, 12B Longclaw Drive, Montague Gardens, Cape Town, SOUTH AFRICA

www.boomgatesystems.co.za

Manufacturers & Suppliers of:

- Traffic Barriers • High Security Spike Barriers • Road Blockers • Turnstiles • Security Booths • Pedestrian Barriers
- Paraplegic Gates • Speed Gates • Bollards • Goosenecks • Magnetic Locks • Metal Enclosures • Rubber Islands